



RF Explorer Touch Release Notes v2.7.2206

RF Explorer Spectrum Analyzer firmware v1.33

RF Explorer Spectrum Analyzer Plus firmware v3.39

RF Explorer Signal Generator firmware v1.34

RF Explorer Spectrum Analyzer ProAudio firmware v3.08

RF Explorer IoT for Raspberry firmware v1.16

For additional help and user manual please visit www.rf-explorer.com/touch

Updates of the RF Explorer User Manual are [available online](http://www.rf-explorer.com/touch).



Please consider the environment before printing this document.

Version 2.7.2206

- *Recommended RF Explorer Spectrum Analyzer Standard firmware: v1.33*
- *Recommended RF Explorer Spectrum Analyzer Plus firmware: v3.39*
- *Recommended RF Explorer Spectrum Analyzer ProAudio firmware: v3.08*
- *Recommended RF Explorer Signal Generator firmware: v1.34*

Note: Starting with this version the suggested tool is RF Explorer Touch. The legacy RF Explorer for Windows tool will no longer have enhancements and all future improvements will be focused on RF Explorer Touch, which is compatible with all platforms as well as suitable for Tablets and touch sensitive devices.

Enhancements

- Multiple language (English, French, German and Spanish) support for license register process
- Integrated RF Explorer Generator tool inside RF Explorer Touch application
- Improved frequency calibration algorithm speed
- Added frequency calibration capability in RF Explorer Touch application
- Added tracking SNA mode in RF Explorer Touch application
- Installer checks USB SiLabs drivers installed and installs it if not found

Fixes

- Several Frequency Calibration fixes
- Other Minor fixes

Version 2.6.2203

- *Recommended RF Explorer Spectrum Analyzer Standard firmware: v1.33*
- *Recommended RF Explorer Spectrum Analyzer Plus firmware: v3.33*
- *Recommended RF Explorer Spectrum Analyzer ProAudio firmware: v3.08*
- *Note: This version does not support RF Explorer Signal Generator. Please use specific tool from www.rf-explorer.com/rfgenhelp*

Note this version unifies with RF Explorer Windows Suite.

License and registration

This software requires registration and internet connection.

You must provide a valid registration email to receive an activation code for your computer. If you do not receive a valid email, check your spam folder.

Software registration is now possible by email, useful if your computer is behind a firewall/proxy preventing connection to RF Explorer License Server.

Privacy policy is available online at www.rf-explorer.com/privacy

Enhancements

- Compatibility with new RF Explorer Spectrum Analyzer model 6GWB PLUS
- Included RF Explorer Uploader tool inside application
- Max Hold data trace and display improvements

Version 2.6.2106

- *Recommended RF Explorer Spectrum Analyzer Standard firmware: v1.33*
- *Recommended RF Explorer Spectrum Analyzer Plus firmware: v3.29*
- *Recommended RF Explorer Spectrum Analyzer ProAudio firmware: v3.08*
- *Note: This version does not support RF Explorer Signal Generator. Please use specific tool from www.rf-explorer.com/rfgenhelp*

Note this version unifies with RF Explorer Windows Suite.

License and registration

This software requires registration and internet connection.

You must provide a valid registration email to receive an activation code for your computer. If you do not receive a valid email, check your spam folder.

Software registration is now possible by email, useful if your computer is behind a firewall/proxy preventing connection to RF Explorer License Server.

Privacy policy is available online at www.rf-explorer.com/privacy

Enhancements

- RF Explorer software now works correctly with optional Wideband license for RF Explorer PLUS models, for more details visit www.rf-explorer.com/wideband

Version 1.7.2105

- *Recommended RF Explorer Spectrum Analyzer Standard firmware: v1.33*
- *Recommended RF Explorer Spectrum Analyzer Plus firmware: v3.28*
- *Recommended RF Explorer Spectrum Analyzer ProAudio firmware: v3.08*
- *Note: This version does not support RF Explorer Signal Generator. Please use specific tool from www.rf-explorer.com/rfgenhelp*

License and registration

This software requires registration and internet connection.

You must provide a valid registration email to receive an activation code for your computer. If you do not receive a valid email, check your spam folder.

Software registration is now possible by email, useful if your computer is behind a firewall/proxy preventing connection to RF Explorer License Server.

Privacy policy is available online at www.rf-explorer.com/privacy

Enhancements

- RF Explorer firmware and software upgrade will be alerted when a new version is available. This is a simpler way to keep the software updated up to the latest version at all times.
- Mouse over a Radio Standard now shows detailed information of the channel selected, and highlighted channel width.
- Alphanumeric and Numeric keyboard on screen are now configurable. By default they will be disabled in configurations where a touchscreen is not available, and can be enabled/disabled in the Config menu.
- Note: Touch keyboards for Amplitude and Frequency are always available.

Fixes

- RF Module can now be correctly changed when WiFi Analyzer is active. Before this fix some modules may not correctly be selected in this mode.
- Resolution changes in sweep points now correctly honor the Preset configuration. Before this fix, changing the selected resolution may adjust to invalid stop frequency or span.

Version 1.6.2101

- *Recommended RF Explorer Spectrum Analyzer Standard firmware: v1.31*
- *Recommended RF Explorer Spectrum Analyzer Plus firmware: v3.19*
- *Recommended RF Explorer Spectrum Analyzer ProAudio firmware: v3.08*
- *Note: This version does not support RF Explorer Signal Generator. Please use specific tool from www.rf-explorer.com/rfgenhelp*

License and registration

This software requires registration and internet connection.

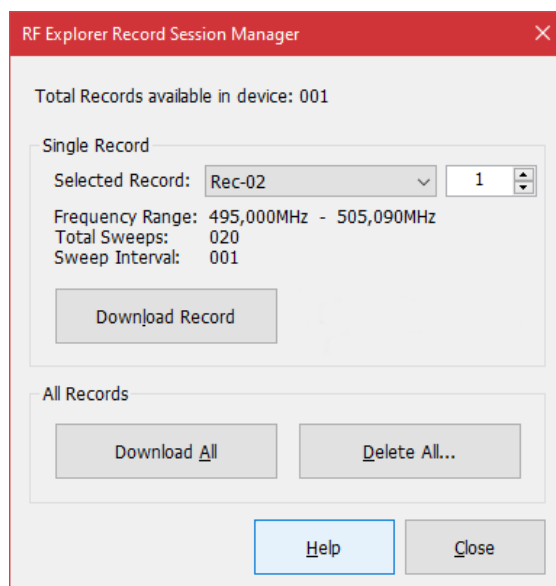
You must provide a valid registration email to receive an activation code for your computer. If you do not receive a valid email, check your spam folder.

Software registration is now possible by email, useful if your computer is behind a firewall/proxy preventing connection to RF Explorer License Server.

Privacy policy is available online at www.rf-explorer.com/privacy

Enhancements

- Includes support for RF Explorer Spectrum Analyzer PLUS sweep record storage. With this new feature, the Spectrum Analyzer can record sweeps while working standalone in its internal memory, and download it on the computer as data files for later processing. For more details visit [online help](#)
- For more details on registering this feature visit www.rf-explorer.com/rec



Version 1.5.2009

Enhancements:

- Default mode is now 512 points sweep scan for PLUS models, making it easier to use the device in high resolution mode
- New Waterfall 2D/3D graphical display (Not supported for Linux platforms)
- New WiFi mode supporting 2.4GHz and 5GHz bands
- New support for Limit Lines including alarm
- New support customizable for Radio Standards
- Improved CSV file export
- This new version requires registration with a valid email, this helps provide better support when incidents are reported. For details on privacy policies please read www.rf-explorer.com/privacy

Spectrum Analyzer support:

- Updated support for all RF Explorer Spectrum Analyzer models and latest firmware versions
- Software is available and supported in the following platforms:
 - Microsoft Windows 7, 8.x, 10
 - Linux latest distributions (tested with Ubuntu 18.04 and Mono 6.0)
 - macOS with versions 10.11 – 10.14 using Mono 4.8.0. Support for Catalina and newer macOS versions are not supported ... please use www.rf-explorer.com/vm as an alternative

Note: This version does not support RF Explorer Signal Generator. Please use specific tool from www.rf-explorer.com/rfgenhelp

Version 1.4.2002

Enhancements:

- Added touch gestures to change frequency and amplitude axis
- New touch sensitive data labels on spectrum analyzer screen, an easier way to select different configuration settings with a single click
- Improved support for CSV files compatible with IAS, WSM, WWB
- New historical navigation bar to easily pause and replay past events
- Added Tech Support data capture to help diagnose setup problems
- High resolution support now include up to 4096 points
- Improved data capture speed

Spectrum Analyzer support:

- Added support for all RF Explorer spectrum analyzer models
- Software is available and supported in the following platforms:
 - Microsoft Windows 7, 8.x, 10
 - macOS with versions 10.11 – 10.14 using Mono 4.8.0. Support for Catalina and newer macOS versions are not supported. For more details and setup instructions visit [this link](#)
 - Linux latest distributions (tested with Ubuntu 18.04 and Mono 6.0)
 - Raspberry Pi models 2B, 3B, 3B+ and 4B using Raspbian, please visit this [link for more details](#).

Note: This version does not support RF Explorer Signal Generator. Please use specific tool from www.rf-explorer.com/rfgenhelp

Version 1.3.1910

Spectrum Analyzer support:

- Support for standard Spectrum Analyzer such as RF Explorer 3G Combo, 6G Combo, etc
- Support for Spectrum Analyzer PLUS models such as RF Explorer WSUB1G PLUS and ProAudio
- Support for RF Explorer IoT for Raspberry. For more details visit www.rf-explorer.com/IoT
- Added support for USB port selection when more than one device is connected, including support for Raspberry Pi connecting devices in USB port.
- Software is available and supported in the following platforms:
 - Microsoft Windows 7, 8.x, 10
 - macOS with versions 10.11 – 10.14 using Mono 4.8.0. Current version is BETA for macOS. For more details and setup instructions visit [this link](#)
 - Linux latest distributions (tested with Ubuntu 18.04 and Mono 6.0)
 - Raspberry Pi models 2B, 3B, 3B+ and 4B using Raspbian, please visit this [link for more details](#).

Note: This version does not support RF Explorer Signal Generator. Please use specific tool from www.rf-explorer.com/rfgenhelp

Version 1.2.1905.5

Spectrum Analyzer support:

- Support for standard Spectrum Analyzer such as RF Explorer 3G Combo, 6G Combo, etc
- Support for Spectrum Analyzer PLUS models such as RF Explorer WSUB1G PLUS
- For correct operation, start the application with only spectrum analyzer connected to USB. For more devices connected to USB is suggested to connect them after the RF Explorer Touch loaded and connected to the Spectrum Analyzer device
- This version does not support RF Explorer Signal Generator. Please use specific tool from www.rf-explorer.com/rfgenhelp
- Software is available for Microsoft Windows 7, 8.x and 10 and Linux latest distributions

Raspberry Pi support:

- Support for RF Explorer IoT for Raspberry Pi models 2B, 3B and 3B+
- This version does not support handheld RF Explorer Spectrum Analyzer connected to the USB port of a Raspberry Pi. This will be enabled in upcoming versions. Only IoT board is supported. For more details visit www.rf-explorer.com/IoT

License

RF Explorer embedded firmware is copyrighted © by RF Explorer Technologies SL, 2010-2022

RF Explorer is a registered trademark in USA, EU and other Countries.

Disclaimer

For more info on RF Explorer, please visit

www.rf-explorer.com

For instructions to upload this new firmware in your RF Explorer unit, please visit online documentation at

www.rf-explorer.com/upgrade

Some of these new features documented below may not be available in the user manual until a final release is published. For questions, please go to RF Explorer forum at

www.rf-explorer.com/forum

You agree that the software is provided as-is, without warranty of any kind (either express or implied). Accordingly, we make no warranties, representations or guarantees, either express or implied, and disclaims all such warranties, representations or guarantees, including, without limitation, the implied warranties of merchantability and fitness for any particular purpose, as to: (a) the functionality or non-infringement of program, any modification, a combined work or an aggregate work; or (b) the results of any project undertaken using the program, any modification, a combined work or an aggregate work. In no event shall the contributors be liable for any direct, indirect, incidental, special, exemplary, consequential or any other damages (including, but not limited to, procurement of substitute goods or services; loss of use, data, or profits; or business interruption) however caused and on any theory of liability, whether in contract, strict liability, or tort (including negligence or otherwise) arising in any way out of the use of the program, even if advised of the possibility of such damages. You hereby waive any claims for damages of any kind against contributors which may result from your use of the firmware.